

# 20M RUTHMANN ECOLINE RS 200 TRUCK MOUNTED PLATFORM



Working Height: 20m



Cage Capacity: 2 or SWL



GVW: 3,500kgs



Maximum Outreach: 10.7m



Safe Working Load: 250kgs



IPAF Category 1b

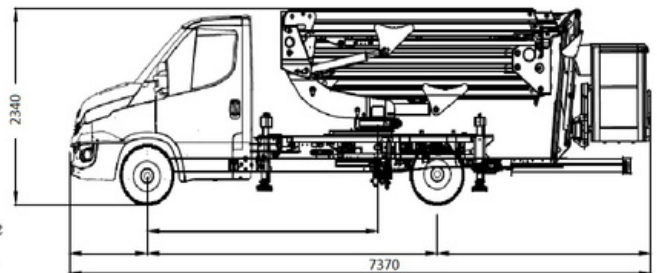
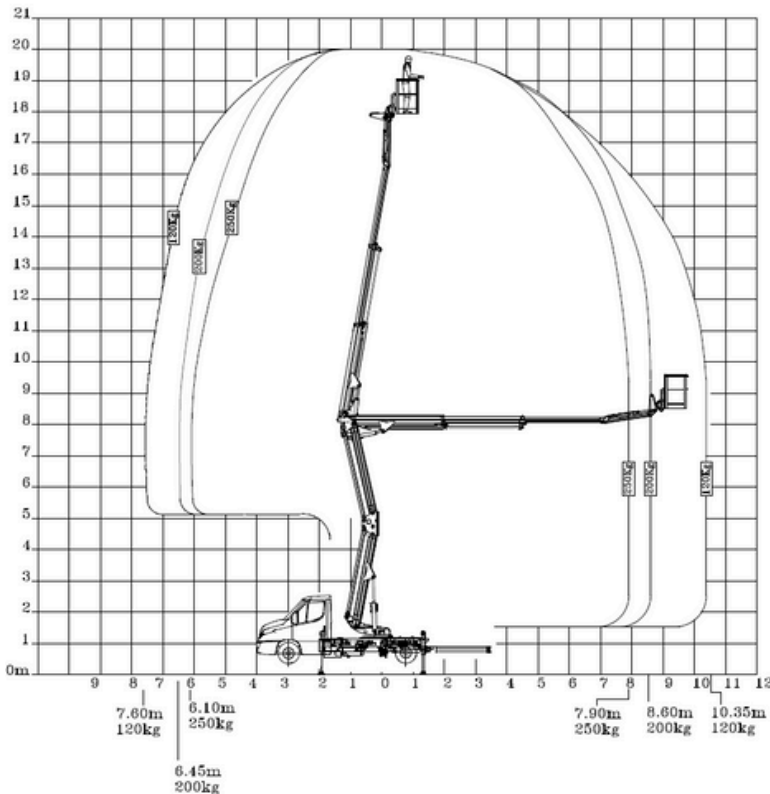
Our Ruthmann Ecoline truck mounted platforms have a working height of 20m, horizontal outreach of 10.7m and a SWL of 250kgs in the platform. With an articulated boom and movable jib, the Ruthmann Ecoline 200 easily manoeuvres over obstacles to get you exactly where you need to be to complete your work safely and efficiently.

# 20M RUTHMANN ECOLINE RS 200 TRUCK MOUNTED PLATFORM

Compact and with a travelling height of just 2.34m, the Ruthmann Ecoline 200 is the ideal option for work in areas with restricted space or difficult access. It has an SWL of 250kg meaning you can safely lift two people plus tools to complete a variety of tasks, including roof work, painting, cleaning and building maintenance and repair.

## MAIN FEATURES & BENEFITS

- 3500kgs - can be driven on a standard licence.
- Compact - ideal for work in areas with restricted access.
- Excellent 10.7m outreach to get you over obstacles.
- Flat bottom cage with 250kgs safe working load - easy access for roofing work.
- Versatile - Articulated boom and movable jib provide easy access for a wide range of tasks.



Max Working Height: 20m  
Max Horizontal Outreach: 10.7m  
Max Cage Floor Height: 18m  
Max Safe Working Load: 250kg  
Max Persons in Cage: 2  
Max GVW: 3,500kg

Cage Dimensions: 1.3 X 0.7 x 1.1m  
Travelling Machine Length: 7.37m  
Travelling Max Height: 2.34m  
Travelling Machine Width: 2.2m  
Working Machine Width: 3.32m  
IPAF Category: 1b

**NEWCASTLE** - North East: 0191 236 7120

**HUNTINGDON** - Cambridgeshire: 01480 891 581

**NOTTINGHAM** - East Midlands: 0115 838 3088

**ILKESTON** - East Midlands: 0115 979 1068

**TIPTON** - West Midlands: 0121 827 6985

[www.warrenaccess.co.uk](http://www.warrenaccess.co.uk)

Part of the  **UK TOOL HIRE GROUP LTD**

